

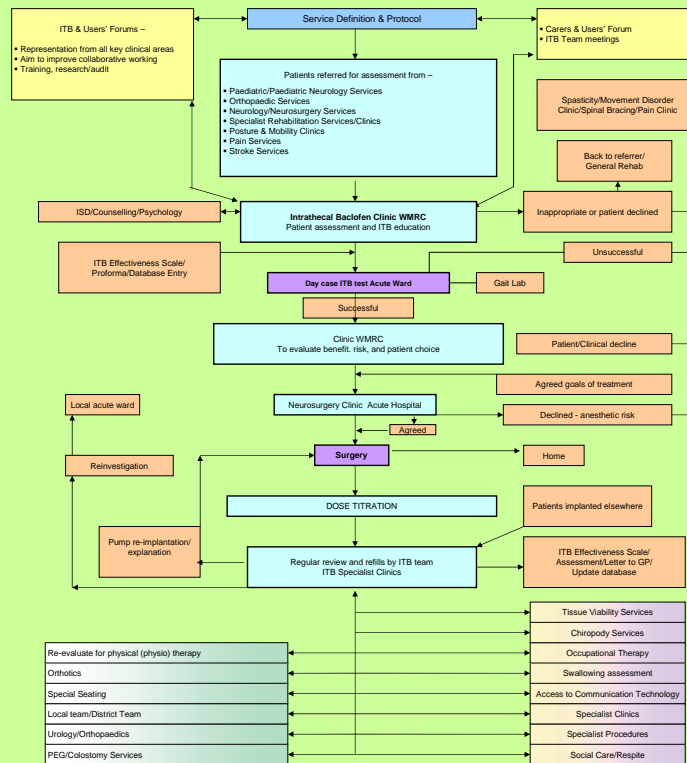
Authors: Amjad Mahmood, Dr Alex Ball, Dr Imad Soryal, Dr Bandara Panagamuwa, Nicole Canning

## 1. Background

Intrathecal baclofen (ITB) therapy is an established treatment for selected patients with severe spasticity unresponsive to or intolerant of oral antispasticity medication.

A number of UK institutions offer all or part of the ITB care pathway: initial assessment, patient education, screening/test dose, surgery (implantation of infusion device), dosage titration and long term maintenance.

The West Midlands Rehabilitation Centre (WMRC) is unique in combining a comprehensive service with leading a national ITB forum which aims to standardise protocols of care. A process map of the service is shown in the middle.



## 2. Clientele

Currently 73 adults (age range 17 - 64 years)

Diagnosis	n	%
Multiple sclerosis	30	42
Cerebral palsy	17	23
Acquired brain injury	16	22
Spinal cord injury	2	3
Other	8	11

### Indications:

- \* Severe Spasticity
- \* Refractory to or intolerant of oral agents
- \* Sufficient Body mass to support pump
- \* Agreed appropriate goals

### Exclusions:

- \* Infection
- \* Baclofen sensitivity
- \* Increased tone of functional benefit

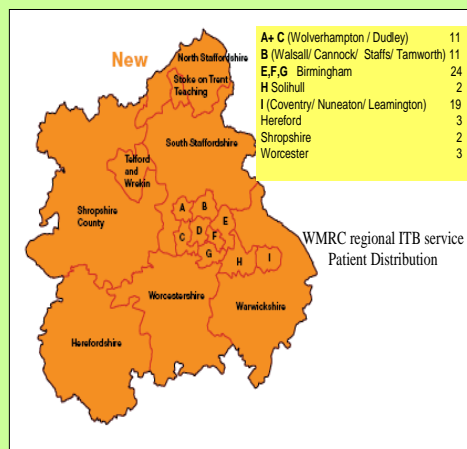


## 3. Development

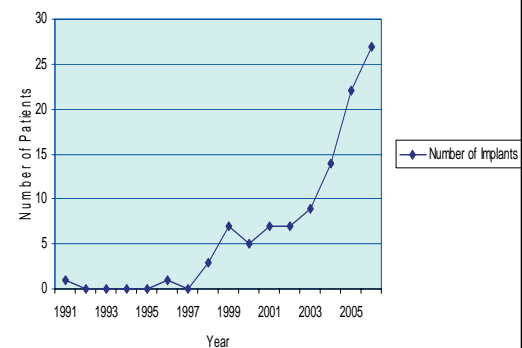
Operational since 2000, the WMRC ITB service adopts an interdisciplinary team approach through a designated specialist clinic, with role-expansion of a clinical nurse specialist (CNS), dedicated neurosurgeon, clinic coordinator and team lead.

Expertise in ITB therapy and clinical leadership for the team is provided by the consultant in rehabilitation medicine.

The CNS role has been expanded not just to provide patient assessment, education, dose titration and pump refills but also team leadership. This includes capacity and service development planning, implementation and evaluation of service.



New and Replacement Pump Implantations per Year 1991 - 2006



## 4. Innovation

- Competency assessments for all involved practitioners
- Register of clinical incidents (see outcomes)
- User and Carer Forum
  - Used for consultation in service definition and protocols of care
  - Educational role for prospective patients and feedback on service quality
- Nurse-led specialist clinic and team lead role
- National ITB forum
  - Leading forum to standardise care and protocols nationally
- National Document available on ITB web page link, visit:

[www.southbirminghampct.nhs.uk](http://www.southbirminghampct.nhs.uk)

## 5. Outcomes

Total number of pumps implanted = 113 (patients = 94)  
 Total number of ITB users as at 01.05.07 = 73 (deceased former users = 21)  
 Satisfaction with agreed achieved goals = 93 patients (99%)

Complications	n	%
Infection (systemic, post-operative)	1	<1
Infection (wound post-op)	1	<1
Pump erosion through skin (needing resiting)	2	2
Catheter-pump disconnection with leak	6	5.3
Catheter fracture	3	2.3
Catheter migration	1	<1
Overdose / programming error	1	<1

## Summary/Implications

The WMRC ITB service represents a successful model of quality care through a well-developed specialist clinic applicable to other areas of rehabilitation medicine. The establishment of a register and database has allowed collection of vital outcome data to inform the future development of this innovative service.